

# The Graticule Weekly

UGA Geography's Weekly Newsletter



## GEOGRAPHY DEPT. TO OFFER NEW UGRD CERTIFICATE

### Climate Change Geographies Program of Study Approved for Fall 2025



Jennifer Rice  
Professor of  
Geography



Gabe Kooperman  
Associate Professor  
of Geography



John Knox  
Josiah Meigs  
Distinguished  
Teaching Professor

UGA's Department of Geography is proud to announce the approval of its newest undergraduate certificate, Climate Change Geographies. The certificate proposal, created by Geography professors Jennifer Rice, Gabe Kooperman, and John Knox, was approved in early March and will be active beginning in Fall 2025. The department has shared the following abstract on the certificate:

"The Undergraduate Certificate in Climate Change Geographies trains students for careers that address the varied challenges of climate change from local to global scales. Through the program's curriculum, students will advance their understanding of the social and natural processes of climate change and develop the knowledge and skills needed to tackle issues at the intersection of the physical and human dimensions of climate change. This program is rooted in expertise on climate change research and instruction within UGA's Department of Geography and expands broadly to provide connections with scientific, economic, and political fields of study across the UGA's campus. In completing the certificate, students will be prepared to apply an array of geographical and critical thinking skills to solve real-world problems aimed at contributing to a more just and sustainable future in a changing climate. The certificate requirements include two core courses on the physical and human geographies of climate change, one geography elective selected from an array of topics tailored to the student's needs, and one elective from a list of those available across campus to broaden the student's perspective, for a total of 12 credit hours

Students will also be required to participate in an annual knowledge and cohort-building event with the certificate coordinator from the year they declare the certificate until the year of graduation that includes a written assessment examining the program's learning outcomes and integration of the student's knowledge across courses."

[Click here to see the full program of study for the new Climate Change Geographies Certificate!](#)

## General News and Announcements



The Graticule Weekly is distributed each Friday Afternoon. If you have any news or events you'd like to share throughout the semester, please share them the Geography Department's Communication Coordinator well in advance.

[Past editions of The Graticule Weekly are available to view on our website!](#)



With the Fall semester in full swing, our community remains busy as faculty, staff, students, and visitors navigate our campus. Prioritize your transportation safety and the safety of others by checking out [the Watch For Dawgs official website.](#)



Please download the new UGA Safe app from the Google Play or Apple App stores. Login using your UGA MyID or register as a guest to take advantage of a variety of safety features. For more information, please visit the [UGA Office of Emergency Preparedness website.](#)

Follow us on social media!



## UPCOMING DEFENSES



Kyle Brooks  
Thesis Defense  
April 4, 2025  
3:00pm, GGY 321



Alex Music  
Thesis Defense  
April 4, 2025  
9am, GGY 147



Jielu Zhang  
Dissertation Defense  
April 4, 2025  
12:00pm, GGY 147



Xin Yan  
Comprehensive Exam  
April 18, 2025  
10:00am, GGY 147

For more information about each defense, please see the flyers at the end of this week's Graticule!

## MARK YOUR CALENDAR



April 18  
GGY Bldg. 200D  
3:00 - 4:30 pm

Join us for a talk by Dr. Rachel Scarlett titled "The struggle to be 'a little more free': How communities express agency through water practices."



April 23  
GGY Room 200D  
3:30pm

Our 2025 Geography Undergraduate Awards Reception will take place on Wednesday, April 23rd. Award nominations are closed.



May 9  
MLC Reading Room  
11:00 am

Our 2025 Geography Graduation Ceremony will take place on Friday, May 9th at 11am. More information about location, ticketing, & more coming soon.



## Social Media

Want to stay up to date with all things UGA Geography? Follow us on our social media accounts. If you have any events, news, awards, or other information you'd like to share on our social media, please reach out to Matt Calonius.



<https://www.facebook.com/GeographyDepartmentUGA/>



<https://www.instagram.com/geographyuga/>



<https://twitter.com/UGaGeography>



<https://geography.uga.edu>

## OPPORTUNITIES AND ANNOUNCEMENTS



### • [Now Hiring: GIS Specialist Position at The Ray](#)

The Ray is looking for a highly motivated and ambitious GIS Specialist that reports directly to the GIS Manager. This individual needs to be comfortable operating and collaborating with a team of GIS professionals who perform mapping, analysis and modeling for transportation and energy infrastructure for partners in the public and private sector. These abilities will be used to help further the organization's mission to advance and innovate the transportation sector.

- Title: GIS Specialist
- Reports To: GIS Manager
- Position Type: Salaried, full-time position
- Location: This position is hybrid and reports to The Ray office located in Atlanta, GA
- Schedule: Monday - Friday

Support the development and management of GIS maps and applications

- Perform geospatial data development and analysis
- Efficiently manage geospatial databases and aerial photography
- Interpret and analyze remote sensing data
- Accurately maintain geospatial database information by interpreting data from a variety of sources and creating, verifying, and updating information in the geospatial database through the use of GIS software and technologies
- Acquire, process, integrate, visualize, and analyze geospatial data provided by The Ray's partners into existing GIS datasets, and GIS products
- Present results and findings to The Ray staff and/or The Ray's partners.
- Attend meetings as requested by The Ray staff.

## Prioritize Your Well Being:

### Crafty Coping Club

Crafty Coping Club      April 9th  
6:30 - 7:30pm  
UHC Health Center

Crafts, chats and learning new skills -  
Crafts provided or bring your own -  
Crafting also not required, just come chat!

### Change Stress Into Success

Change Stress      April 9th  
Into Success      1:00 - 1:50pm  
Online

Join us for this four-part rotating series on managing stress & anxiety. You will learn how to identify and manage your own stress and anxiety as it arises.

### UMatter

UMatter      April 8th  
6:00pm  
MLC 147

Step into our 60-90 minute interactive upstander intervention program, where college students will be given the knowledge and skills to take action when they see someone in need. Change the narrative and become an upstander. All participants will receive a free Fontaine T-Shirt!



## OPPORTUNITIES AND ANNOUNCEMENTS

- [Museum of Natural History Financial Awards](#)



UNIVERSITY OF  
**GEORGIA**

Georgia Museum of  
Natural History

**JOSHUA LAERM**

Academic Support Award for Graduate and  
Undergraduate Research

The Georgia Museum of Natural History offers financial awards through the Joshua Laerm Academic Support Fund for the purpose of supporting undergraduate and graduate research in natural history. Studies that may be supported include but are not limited to: field or collection-oriented research in archaeology, behavioral biology, ecology, ethnobiology, evolutionary biology, geology, paleontology, plant biology, systematics, wildlife biology, zoology, or any other work which fits within a broad interest in evolutionary processes and the relationships between organisms, including humans, in the natural world. Requests may be for supplies, equipment, publishing, travel, or other costs associated with field or collection-oriented research and disseminating the results. Awards for travel to meetings will only be considered if the student is presenting a paper or poster as senior author.

**Eligibility:** The award is limited to currently-enrolled University of Georgia students who have completed at least one semester at UGA. Students may submit only one application per academic year but may receive support more than once if all requirements have been completed for the first award.

2025 Undergraduate Nomination Deadline: Wednesday, September 17, 12:00 NOON (\$1000 cap)

2025 Graduate Application Deadline: Wednesday, September 17, 12:00 NOON (\$1000 cap)

Only pdf submissions will be accepted. Send pdfs of undergraduate nominations and graduate applications with the subject line "Laerm Award Application" to Victor D. Thompson (vdthom@uga.edu) and CC Jay Boyd (jay.boyd@uga.edu). Letters of support from graduate students' major professors may be sent separately to the same address or attached to the graduate student's application. Electronic submissions must be received before **NOON** on September 17, 2025. Applications must be complete to be considered.

Award decisions will be announced Monday, September 22, 2025.

Undergraduate nominations are judged separately from graduate applications and receive a separate award.

Undergraduate Nomination Format: Nominations should be prepared by a faculty mentor and consist of no more than two pages, including the budget, in at least 12pt font following the outline described on the museum's web site.

Graduate Application Format: Applications from graduate students should consist of no more than three pages, including the budget, in at least 12pt font format, accompanied by a one page letter of support from the applicant's major professor following the outline described on the museum's web site.

Undergraduate nominations and graduate applications must be accompanied by a budget showing how the funds will be used. Expenditures must conform to university accounting procedures. All funds awarded must be expended by May 31, 2026. The Committee reserves the right to modify the funding requested.

For more information and to view previously supported research search for "Laerm Award" at or contact Victor D. Thompson at vdthom@uga.edu.

## General News and Announcements



*The Graticule Weekly is distributed each Friday Afternoon. If you have any news or events you'd like to share throughout the semester, please share them the Geography Department's Communication Coordinator well in advance.*

*Past editions of The Graticule Weekly are available to view on our website!*



*With the Fall semester in full swing, our community remains busy as faculty, staff, students, and visitors navigate our campus. Prioritize your transportation safety and the safety of other's by checking out the Watch For Dawgs official website.*



*Please download the new UGA Safe app from the Google Play or Apple App stores. Login using your UGA MyID or register as a guest to take advantage of a variety of safety features. For more information, please visit the UGA Office of Emergency Preparedness website.*

Follow us on social media!



**GET YOUR  
FLU SHOT ON CAMPUS!**  
NO OUT-OF-POCKET COST FOR STUDENTS!

**#FLUGA**

#BeWellUGA

**SCAN TO FIND  
DATES & LOCATIONS**



University Health Center  
College of Pharmacy  
Well-Being Resources

Bring your UGA ID  
& Insurance Card!



# OPPORTUNITIES & ANNOUNCEMENTS

- [Human Geography Postdoc at Dartmouth](#)

The [Department of Geography](#) at Dartmouth College invites applications for a postdoctoral fellow in Human Geography. This two-year position will augment and complement existing departmental strengths, which include critical urban and health studies, Black geographies, feminist geographies, and nature-society relations.

This position is full-time, non-remote, in-residence at Dartmouth in Hanover, NH, with a start date as early as July 1, 2025. Advised and hosted in the Department of Geography, the postdoctoral researcher is expected to contribute intellectually to the department and Dartmouth, and to teach two 10-week long courses over two years. Postdoctoral fellows are also supported by the [Guarini School for Graduate and Advanced Studies](#), including their [diversity and inclusion initiatives](#).

[Dartmouth](#) is committed to academic excellence and encourages the open exchange of ideas within a culture of mutual respect. People with different backgrounds, life experiences, and perspectives make the Dartmouth community diverse, which enhances academic excellence. Applicants should address in their cover letter how their research, teaching, service, and/or life experiences prepare them to advance Dartmouth's commitment to diversity in service of academic excellence.

#### Qualifications

PhD, or ABD with degree received by the start date, in Geography or a closely related field.

#### Application Instructions

Please submit all materials electronically through Interfolio:

1. Letter of application of up to four (4) pages that includes research and teaching interests as well as preparation to advance Dartmouth's commitment to diversity in service of academic excellence;
2. Curriculum vitae, including names and contact information for three references;
3. One representative writing sample.

Review of applications will begin on March 3, 2025 and continue until the position is filled. Inquiries should be directed to Department Chair Xun Shi at [geography@dartmouth.edu](mailto:geography@dartmouth.edu).

- [Important Notes For Graduate Students - from Fabiana Hayden](#)

1) If you are getting ready to reach important milestones in your program and would like to chat about your progress, schedule a short meeting with me here: [Bookings with me - Fabiana Hayden - Outlook](#). I will be happy to schedule a virtual meeting in Zoom if you're not available on Campus.

- The Geography Graduate Handbook is also a great resource to guide you through your progress:

- [MA/MS Handbook](#)
- [PhD Handbook](#)

2) Remember to register for Summer term soon: [Graduate Students](#) | [UGA Summer](#)

3) Please fill out and get your advisor's approval in the [Advising Form](#). Then send the signed version to me by email.

- This is done each term and is a crucial step to clearing holds and getting departmental permissions for desired courses.

4) Note that Fall 2025 registration for graduate students opens on Monday, April 7: [Registration Dates](#) | [Calendars](#) | [General Information](#) | [Office of the Registrar](#)

## Social Media

*Want to stay up to date with all things UGA Geography? Follow us on our social media accounts. If you have any events, news, awards, or other information you'd like to share on our social media, please reach out to Matt Colonius.*



<https://www.facebook.com/GeographyDepartmentUGA/>



<https://www.instagram.com/geographyuga/>



<https://twitter.com/UGaGeography>



<https://geography.uga.edu>

# OPPORTUNITIES & ANNOUNCEMENTS

## • TUTOR, UNIVERSITY OF GEORGIA ATHLETIC ASSOCIATION ACADEMIC SUPPORT SERVICES

### DESCRIPTION

Provide individual and small group tutoring to student-athletes in the Rankin Smith Student-Athlete Academic Center. Assist students in improving academic achievement by meeting with them weekly to clarify concepts, enhance study skills, and review class materials.

### COURSES NEEDED

GEOG 1111

\*additional courses in other subjects needed as well\*

### COMPENSATION/HOURS

\*Undergraduate students - \$13/hour

\*Graduate students/professionals - \$15/hour

\*\*Please note that individuals with an assistantship or any other on-campus employment cannot exceed 20 hours per week across all jobs\*\*

### POSITION TYPE

\*Part-time, not eligible for benefits

\*Tutoring will be conducted in-person

\*Hours of Operation:

Sunday – 5-9:30pm

Monday-Thursday – 8am-9:30pm

Friday – 8am-4:30pm

\*evening availability is not required, but always needed

### QUALIFICATIONS

\*Must be in at least second year of undergraduate study or a graduate student/professional

\*Must have earned a B or above in course(s) you are tutoring

\*Must have a minimum GPA of 3.0

### DESIRED CLASS LEVEL(S)

\*3rd Year, 4th Year, Graduate Student, Alumnus

### EXPERIENTIAL LEARNING CREDIT

\*Undergraduate student tutors may be eligible to receive Experiential Learning Credit

### APPLICATION PROCEDURES/ADDITIONAL INFORMATION

\*If you are interested, please reach out to [rankintutoring@uga.edu](mailto:rankintutoring@uga.edu).

## General News and Announcements



*The Graticule Weekly is distributed each Friday Afternoon. If you have any news or events you'd like to share throughout the semester, please share them the Geography Department's Communication Coordinator well in advance. Past editions of The Graticule Weekly are available to view on our website!*



*With the Fall semester in full swing, our community remains busy as faculty, staff, students, and visitors navigate our campus. Prioritize your transportation safety and the safety of other's by checking out [the Watch For Dawgs official website](#).*



*Please download the new UGA Safe app from the Google Play or Apple App stores. Login using your UGA MyID or register as a guest to take advantage of a variety of safety features. For more information, please visit the [UGA Office of Emergency Preparedness website](#).*

Follow us on social media!







# UGA GEOGRAPHY THESIS DEFENSE

IN PERSON

## Characterizing the hazard of rainfall-diverse hurricane profiles in the southeast United States

Please join Alex Music  
in defending her M.S.  
Geography thesis, and  
learn about how we  
forecast and respond  
to hurricane rainfall  
hazards.



Alex Music's  
M.S. Defense

April 4, 9 AM

Geog. Room 147

Committee:  
Dr. J. Marshall  
Shepherd  
(Major advisor)  
Dr. Andrew  
Grundstein  
Dr. Michelle  
Ritchie



# Using Geospatial Analysis & Explainable Machine Learning to Examine Risk Factors of Out-of-hospital Cardiac Arrest Survival

## JIELU ZHANG's DOCTORAL DEFENSE

Join us to explore Jielu's research on developing a geospatially-aware framework that integrates explainable AI and geospatial analysis to improve survival outcomes for cardiac arrest patients.



## COMMITTEE MEMBERS

Dr. Lan Mu (Major Advisor)  
Dr. Andrew Grundstein  
Dr. Gengchen Mai  
Dr. Donglan Zhang (NYU)



**April 4th**  
**12:00 pm – 1:30 pm**



**Room 321**  
**Geography Bldg.**



**Scan for**  
**Zoom Link**



Department of Geography  
Franklin College of Arts and Sciences  
**UNIVERSITY OF GEORGIA**







**Center for Counseling  
& Personal Evaluation**  
*Mary Frances Early College of Education*  
**UNIVERSITY OF GEORGIA**



**Thursdays  
starting  
February 13th  
6:00-7:30pm**



**SCAN THE QR CODE TO  
COMPLETE AN INTEREST FORM  
OR CALL 706-542-8508**



# **Latinx Student Support Group**





**The Fontaine Center**

*University Health Center*

*Student Affairs*

**UNIVERSITY OF GEORGIA**

# GRADUATE STUDENT GROUP WELLNESS COACHING

*Looking to connect with students working on dissertations, theses, academic projects, or research papers? Register for Graduate Student Group Wellness Coaching to stay motivated and improve strategies for time management and work/life balance.*

*Join us for 30-minute sessions to discuss academic goals and writing strategies or stay for an open 1.5 hour writing lab to work on your projects! Snacks provided!*

**FRIDAYS STARTING 1-24**  
**WILLIS WRITING CENTER**  
**PARK HALL 66**  
**11AM-1PM**

*\*Snacks will be provided!*







### GET HELP

Whether it's a life-threatening emergency, a non-emergency concern, or a crime tip; there are several options to relay those concerns.

### MOBILE BLUELIGHT

Immediately call the UGA Police and share your location in real-time with them.

### FRIEND WALK

Send your location in real-time to a friend so they can watch you as you walk to your destination.

### CHAT WITH UGA POLICE

Report a concern by texting with UGA Police.

### HOW TO RESPOND TO AN EMERGENCY

Conveniently located in one place to help you take immediate action.



**DOWNLOAD  
THE APP!**

[t.uga.edu/7Xf](https://t.uga.edu/7Xf)



FRIDAY, APRIL 11TH, 2025

# The Graticule Weekly

UGA Geography's Weekly Newsletter



## FACULTY SPOTLIGHT

### Nik Heynen Awarded 2025 AAG James Blaut Award



UGA Geography Distinguished Research Professor, Nik Heynen, has been awarded the 2025 American Association of Geographers James Blaut award. The award was conferred at this year's AAG annual meeting in Detroit, where Dr. Heynen delivered a lecture titled "Echoes of Bombingham: The Longue Durée of Racial Terror, the White Mob, and Abolition Geography."

The AAG has shared the following description of Dr. Heynen's research and scholarship: "Dr. Nik Heynen's work has transformed abolition ecology, urban political ecology, and socialist geography. His scholarship redefines how geography addresses racial capitalism, environmental injustice, and urban inequality, linking radical theory with grassroots action. Through community-engaged research, including partnerships with the Gullah/Geechee community, Heynen demonstrates how geography can challenge systems of oppression, resist land dispossession, and advance collective liberation."

Heynen's research critiques the structural violence of capitalist urbanization while amplifying the resistance of marginalized communities. His work bridges academic and grassroots spaces, offering actionable insights into combating inequality. This session celebrates his vision of geography as a tool for dismantling oppression and building solidarity through scholarship and action." Congratulations, Nik!

[Learn more about Dr. Heynen's Research here!](#)

## Tomorrow - GUSTO Field Trip - Seats Still Available!

Three last-minute cancellations have opened an opportunity for anyone interested to join GUSTO student org and Dr. Amy Ross on a chartered bus for a day trip to [The Legacy Museum](#) in Montgomery tomorrow (Saturday, 4/12). This trip is funded by a donor, so all expenses have been covered, including transportation, lunch at the famous [Pannie-George's](#) onsite with Martin Luther King family friend Nelson Malden, and admission to [The Legacy Sites](#). Dr. Ross will also provide context with content from one of her courses. GUSTO president and Geography undergrad Jamie Jordan has organized this amazing trip! We will board the bus at 6:45 a.m. and will return approximately 9:00pm tomorrow night.

If you are interested or have questions, please contact Leslie Geiser ([lesgei@uga.edu](mailto:lesgei@uga.edu)) or Jamie Jordan ([james.jordan1@uga.edu](mailto:james.jordan1@uga.edu)). First come, first served.

## General News and Announcements



*The Graticule Weekly is distributed each Friday Afternoon. If you have any news or events you'd like to share throughout the semester, please share them the Geography Department's Communication Coordinator well in advance.*

*[Past editions of The Graticule Weekly are available to view on our website!](#)*



*With the Fall semester in full swing, our community remains busy as faculty, staff, students, and visitors navigate our campus. Prioritize your transportation safety and the safety of others by checking out [the Watch For Dawgs official website.](#)*



*Please download the new UGA Safe app from the Google Play or Apple App stores. Login using your UGA MyID or register as a guest to take advantage of a variety of safety features. For more information, please visit the [UGA Office of Emergency Preparedness website.](#)*

Follow us on social media!





## UPCOMING DEFENSES



Xin Yan  
**Comprehensive Exam**  
April 18, 2025  
10:00am, GGY 147



Nancee Uniya  
**Dissertation Proposal Defense**  
May 16, 2025  
10am, GGY 147

## MARK YOUR CALENDAR



April 18  
GGY Bldg. 200D  
3:00 - 4:30 pm

Join us for a talk by Dr. Rachel Scarlett titled "The struggle to be 'a little more free': How communities express agency through water practices."

Dr. Rachel Scarlett is an environmental scientist, mentor, and teacher. She is an Assistant Professor in the Department of Geosciences at Georgia State University. She is broadly interested in how urban development and environmental racism shape our waterways and the communities that use, depend on, and are impacted by urban water.

**2025 Globe Lecture**  
**Dr. Rachel Scarlett**

Join us for a talk by Dr. Rachel Scarlett titled "The struggle to be 'a little more free': How communities express agency through water practices."

**FRIDAY**  
**APRIL 18**

**TIME**  
**3:00-4:30 PM**

**GEOG. BLDG.**  
**ROOM 200D**

[LEARN ABOUT DR. SCARLETT](#)

**RACHEL SCARLETT**  
Assistant Professor  
Georgia State University



April 23  
GGY Room 200D  
3:30pm

Our 2025 Geography Undergraduate Awards Reception will take place on Wednesday, April 23rd. Award nominations are closed.

**UGA GEOGRAPHY**  
WARMLY INVITES YOU TO OUR

**2025**

**Undergraduate Honors & Awards Reception**



May 9  
MLC Reading Room  
11:00 am

Our 2025 Geography Graduation Ceremony will take place on Friday, May 9th at 11am. More information about location, ticketing, & more coming soon.

**UGA GEOGRAPHY**  
WARMLY INVITES YOU TO OUR

**2025**

*Annual Graduation Celebration*

## Social Media

Want to stay up to date with all things UGA Geography? Follow us on our social media accounts. If you have any events, news, awards, or other information you'd like to share on our social media, please reach out to Matt Colonius.



<https://www.facebook.com/GeographyDepartmentUGA/>



<https://www.instagram.com/geographyuga/>



<https://twitter.com/UGaGeography>



<https://geography.uga.edu>

# OPPORTUNITIES AND ANNOUNCEMENTS

## • Southeast Stormwater Association's Annual Conference



**STUDENT  
CONFERENCE SCHOLARSHIP**  
*In Hilton Head, South Carolina*

The Southeast Stormwater Association's Student Conference Scholarship Program is designed to provide valuable educational and professional connections for college students as they explore the stormwater management profession.

for more information, visit  
[www.SESWA.org/2025-scholarship](http://www.SESWA.org/2025-scholarship)

**WHY APPLY?**

- Stormwater specific education.
- Connect your studies to the stormwater industry.
- Gain ideas for your next research project.
- Network with and gain insight from stormwater professionals.
- Immerse yourself in the best water profession – stormwater!

**ELIGIBILITY**

- Full-time students in good standing, currently enrolled at a college or university.
- Students attending classes during the Spring 2024 semester.
- A GPA of 3.0 or higher is preferred.
- Located within 300-miles of conference location is preferred.

**APPLICATION DOCUMENTS**

- An online application.
- A short essay that summarizes why you wish to receive the scholarship.  
(see details in online application)

**APPLY NOW**

**STUDENT  
CONFERENCE SCHOLARSHIP  
RECIPIENTS WILL RECEIVE:**

- SESWA Conference Registration
- Lodging at Conference Hotel for 2 Nights
- Food/Travel Stipend of \$450

**APPLICATION  
DEADLINE  
APRIL 14, 2025**

**APPLY NOW  
SCAN QR  
CODE**



[www.SESWA.org](http://www.SESWA.org) | 1-866-367-7379

## • Merengue Bachata Salsa Dance Fair

This WEDNESDAY, April 16th, from 1:50 p.m. to 2:50 p.m. at Tate Plaza.

Learn about different dances and master some basic steps.

At the end, you'll receive a certificate of attendance if you correctly answer 3 out of 5 questions about what you've learned.

Come and have fun while learning to dance!



## Prioritize Your Well Being:

### Crafty Coping Club

Crafty Coping Club      April 16th  
6:30 - 7:30pm  
UHC Health Center

Crafts, chats and learning new skills -  
Crafts provided or bring your own -  
Crafting also not required, just come  
chat!

### Change Stress Into Success

Change Stress      April 16th  
Into Success      1:00 - 1:50pm  
Online

Join us for this four-part rotating  
series on managing stress & anxiety.  
You will learn how to identify and  
manage your own stress and anxiety  
as it arises.

### UMatter

UMatter      April 17th  
6:00pm  
MLC 147

Step into our 60-90 minute interactive  
upstander intervention program,  
where college students will be given  
the knowledge and skills to take action  
when they see someone in need.  
Change the narrative and become an  
upstander. All participants will receive  
a free Fontaine T-Shirt!



# OPPORTUNITIES AND ANNOUNCEMENTS

- [Museum of Natural History Financial Awards](#)



UNIVERSITY OF  
**GEORGIA**

Georgia Museum of  
Natural History

**JOSHUA LAERM**

Academic Support Award for Graduate and  
Undergraduate Research

The Georgia Museum of Natural History offers financial awards through the Joshua Laerm Academic Support Fund for the purpose of supporting undergraduate and graduate research in natural history. Studies that may be supported include but are not limited to: field or collection-oriented research in archaeology, behavioral biology, ecology, ethnobiology, evolutionary biology, geology, paleontology, plant biology, systematics, wildlife biology, zoology, or any other work which fits within a broad interest in evolutionary processes and the relationships between organisms, including humans, in the natural world. Requests may be for supplies, equipment, publishing, travel, or other costs associated with field or collection-oriented research and disseminating the results. Awards for travel to meetings will only be considered if the student is presenting a paper or poster as senior author.

**Eligibility:** The award is limited to currently-enrolled University of Georgia students who have completed at least one semester at UGA. Students may submit only one application per academic year but may receive support more than once if all requirements have been completed for the first award.

2025 Undergraduate Nomination Deadline: Wednesday, September 17, 12:00 NOON (\$1000 cap)

2025 Graduate Application Deadline: Wednesday, September 17, 12:00 NOON (\$1000 cap)

Only pdf submissions will be accepted. Send pdfs of undergraduate nominations and graduate applications with the subject line "Laerm Award Application" to Victor D. Thompson (vdthom@uga.edu) and CC Jay Boyd (jay.boyd@uga.edu). Letters of support from graduate students' major professors may be sent separately to the same address or attached to the graduate student's application. Electronic submissions must be received before **NOON** on September 17, 2025. Applications must be complete to be considered.

Award decisions will be announced Monday, September 22, 2025.

Undergraduate nominations are judged separately from graduate applications and receive a separate award.

Undergraduate Nomination Format: Nominations should be prepared by a faculty mentor and consist of no more than two pages, including the budget, in at least 12pt font following the outline described on the museum's web site.

Graduate Application Format: Applications from graduate students should consist of no more than three pages, including the budget, in at least 12pt font format, accompanied by a one page letter of support from the applicant's major professor following the outline described on the museum's web site.

Undergraduate nominations and graduate applications must be accompanied by a budget showing how the funds will be used. Expenditures must conform to university accounting procedures. All funds awarded must be expended by May 31, 2026. The Committee reserves the right to modify the funding requested.

For more information and to view previously supported research search for "Laerm Award" at or contact Victor D. Thompson at vdthom@uga.edu.

## General News and Announcements



*The Graticule Weekly is distributed each Friday Afternoon. If you have any news or events you'd like to share throughout the semester, please share them the Geography Department's Communication Coordinator well in advance.*

*Past editions of The Graticule Weekly are available to view on our website!*



*With the Fall semester in full swing, our community remains busy as faculty, staff, students, and visitors navigate our campus. Prioritize your transportation safety and the safety of other's by checking out the Watch For Dawgs official website.*



*Please download the new UGA Safe app from the Google Play or Apple App stores. Login using your UGA MyID or register as a guest to take advantage of a variety of safety features. For more information, please visit the UGA Office of Emergency Preparedness website.*

Follow us on social media!



**GET YOUR  
FLU SHOT ON CAMPUS!**  
NO OUT-OF-POCKET COST FOR STUDENTS!

**#FLUGA**

#BeWellUGA

**SCAN TO FIND  
DATES & LOCATIONS**



University Health Center  
College of Pharmacy  
Well-Being Resources

Bring your UGA ID  
& Insurance Card!

## OPPORTUNITIES AND ANNOUNCEMENTS

- [Southeast Stormwater Association's Annual Conference](#)

PLEASE JOIN US

*Staff Appreciation Celebration*

# THANK YOU, STAFF!

*President Jere W. Morehead invites you to the  
Spring Staff Appreciation Celebration*

**MONDAY  
MAY 12  
2025**

**Drop-in Lunch  
11:00am to 3:00pm**

**STEGEMAN COLISEUM**

*All guests must RSVP at the link provided below.  
A token of appreciation for staff will be available on  
your way out.*

RSVP HERE

 **UNIVERSITY OF  
GEORGIA**

- [12th Annual Atlanta Studies Symposium](#)

We are excited to share the program for the 12th Annual Atlanta Studies Symposium! In addition to our amazing keynote speakers Hannah Palmer and Dr. Jeffrey Ogbar, we have a great set of paper and panel sessions planned for this year's symposium touching on everything from housing and displacement, energy and environmental issues, Black culture in Atlanta and so much more! Please be sure to register for the symposium at the link below!



May 2nd  
Morehouse



## Prioritize Your Well Being:

### Crafty Coping Club

Crafty Coping Club      April 16th  
6:30 - 7:30pm  
UHC Health Center

Crafts, chats and learning new skills -  
Crafts provided or bring your own -  
Crafting also not required, just come  
chat!

### Change Stress Into Success

Change Stress      April 16th  
Into Success      1:00 - 1:50pm  
Online

Join us for this four-part rotating  
series on managing stress & anxiety.  
You will learn how to identify and  
manage your own stress and anxiety  
as it arises.

### UMatter

UMatter      April 17th  
6:00pm  
MLC 147

*Step into our 60-90 minute interactive  
upstander intervention program,  
where college students will be given  
the knowledge and skills to take action  
when they see someone in need.  
Change the narrative and become an  
upstander. All participants will receive  
a free Fontaine T-Shirt!*



# OPPORTUNITIES & ANNOUNCEMENTS

- [Human Geography Postdoc at Dartmouth](#)

The [Department of Geography](#) at Dartmouth College invites applications for a postdoctoral fellow in Human Geography. This two-year position will augment and complement existing departmental strengths, which include critical urban and health studies, Black geographies, feminist geographies, and nature-society relations.

This position is full-time, non-remote, in-residence at Dartmouth in Hanover, NH, with a start date as early as July 1, 2025. Advised and hosted in the Department of Geography, the postdoctoral researcher is expected to contribute intellectually to the department and Dartmouth, and to teach two 10-week long courses over two years. Postdoctoral fellows are also supported by the [Guarini School for Graduate and Advanced Studies](#), including their [diversity and inclusion initiatives](#).

[Dartmouth](#) is committed to academic excellence and encourages the open exchange of ideas within a culture of mutual respect. People with different backgrounds, life experiences, and perspectives make the Dartmouth community diverse, which enhances academic excellence. Applicants should address in their cover letter how their research, teaching, service, and/or life experiences prepare them to advance Dartmouth's commitment to diversity in service of academic excellence.

#### Qualifications

PhD, or ABD with degree received by the start date, in Geography or a closely related field.

#### Application Instructions

Please submit all materials electronically through Interfolio:

1. Letter of application of up to four (4) pages that includes research and teaching interests as well as preparation to advance Dartmouth's commitment to diversity in service of academic excellence;
2. Curriculum vitae, including names and contact information for three references;
3. One representative writing sample.

Review of applications will begin on March 3, 2025 and continue until the position is filled. Inquiries should be directed to Department Chair Xun Shi at [geography@dartmouth.edu](mailto:geography@dartmouth.edu).

- [Important Notes For Graduate Students - from Fabiana Hayden](#)

1) If you are getting ready to reach important milestones in your program and would like to chat about your progress, schedule a short meeting with me here: [Bookings with me - Fabiana Hayden - Outlook](#). I will be happy to schedule a virtual meeting in Zoom if you're not available on Campus.

- The Geography Graduate Handbook is also a great resource to guide you through your progress:

- [MA/MS Handbook](#)
- [PhD Handbook](#)

2) Remember to register for Summer term soon: [Graduate Students](#) | [UGA Summer](#)

3) Please fill out and get your advisor's approval in the [Advising Form](#). Then send the signed version to me by email.

- This is done each term and is a crucial step to clearing holds and getting departmental permissions for desired courses.

4) Note that Fall 2025 registration for graduate students opens on Monday, April 7: [Registration Dates](#) | [Calendars](#) | [General Information](#) | [Office of the Registrar](#)

## Social Media

*Want to stay up to date with all things UGA Geography? Follow us on our social media accounts. If you have any events, news, awards, or other information you'd like to share on our social media, please reach out to Matt Colonius.*



<https://www.facebook.com/GeographyDepartmentUGA/>



<https://www.instagram.com/geographyuga/>



<https://twitter.com/UGaGeography>



<https://geography.uga.edu>

# OPPORTUNITIES & ANNOUNCEMENTS

## • TUTOR, UNIVERSITY OF GEORGIA ATHLETIC ASSOCIATION ACADEMIC SUPPORT SERVICES

### DESCRIPTION

Provide individual and small group tutoring to student-athletes in the Rankin Smith Student-Athlete Academic Center. Assist students in improving academic achievement by meeting with them weekly to clarify concepts, enhance study skills, and review class materials.

### COURSES NEEDED

GEOG 1111

\*additional courses in other subjects needed as well\*

### COMPENSATION/HOURS

\*Undergraduate students - \$13/hour

\*Graduate students/professionals - \$15/hour

\*\*Please note that individuals with an assistantship or any other on-campus employment cannot exceed 20 hours per week across all jobs\*\*

### POSITION TYPE

\*Part-time, not eligible for benefits

\*Tutoring will be conducted in-person

\*Hours of Operation:

Sunday – 5-9:30pm

Monday-Thursday – 8am-9:30pm

Friday – 8am-4:30pm

\*evening availability is not required, but always needed

### QUALIFICATIONS

\*Must be in at least second year of undergraduate study or a graduate student/professional

\*Must have earned a B or above in course(s) you are tutoring

\*Must have a minimum GPA of 3.0

### DESIRED CLASS LEVEL(S)

\*3rd Year, 4th Year, Graduate Student, Alumnus

### EXPERIENTIAL LEARNING CREDIT

\*Undergraduate student tutors may be eligible to receive Experiential Learning Credit

### APPLICATION PROCEDURES/ADDITIONAL INFORMATION

\*If you are interested, please reach out to [rankintutoring@uga.edu](mailto:rankintutoring@uga.edu).

## General News and Announcements



*The Graticule Weekly is distributed each Friday Afternoon. If you have any news or events you'd like to share throughout the semester, please share them the Geography Department's Communication Coordinator well in advance. Past editions of The Graticule Weekly are available to view on our website!*



*With the Fall semester in full swing, our community remains busy as faculty, staff, students, and visitors navigate our campus. Prioritize your transportation safety and the safety of other's by checking out [the Watch For Dawgs official website](#).*



*Please download the new UGA Safe app from the Google Play or Apple App stores. Login using your UGA MyID or register as a guest to take advantage of a variety of safety features. For more information, please visit the [UGA Office of Emergency Preparedness website](#).*

Follow us on social media!





**Center for Counseling  
& Personal Evaluation**  
*Mary Frances Early College of Education*  
**UNIVERSITY OF GEORGIA**



**Thursdays  
starting  
February 13th  
6:00-7:30pm**



**SCAN THE QR CODE TO  
COMPLETE AN INTEREST FORM  
OR CALL 706-542-8508**



# **Latinx Student Support Group**







**The Fontaine Center**

*University Health Center*

*Student Affairs*

**UNIVERSITY OF GEORGIA**

# GRADUATE STUDENT GROUP WELLNESS COACHING

*Looking to connect with students working on dissertations, theses, academic projects, or research papers? Register for Graduate Student Group Wellness Coaching to stay motivated and improve strategies for time management and work/life balance.*

*Join us for 30-minute sessions to discuss academic goals and writing strategies or stay for an open 1.5 hour writing lab to work on your projects! Snacks provided!*

**FRIDAYS STARTING 1-24**  
**WILLIS WRITING CENTER**  
**PARK HALL 66**  
**11AM-1PM**

*\*Snacks will be provided!*





### GET HELP

Whether it's a life-threatening emergency, a non-emergency concern, or a crime tip; there are several options to relay those concerns.

### MOBILE BLUELIGHT

Immediately call the UGA Police and share your location in real-time with them.

### FRIEND WALK

Send your location in real-time to a friend so they can watch you as you walk to your destination.

### CHAT WITH UGA POLICE

Report a concern by texting with UGA Police.

### HOW TO RESPOND TO AN EMERGENCY

Conveniently located in one place to help you take immediate action.



**DOWNLOAD  
THE APP!**

[t.uga.edu/7Xf](https://t.uga.edu/7Xf)



FRIDAY, APRIL 18TH, 2025

# The Graticule Weekly

UGA Geography's Weekly Newsletter



## GEOGRAPHY GLOBE LECTURE: FRIDAY, APRIL 18th

Join us in Welcoming Dr. Rachel Scarlett to UGA Geography




Rachel Scarlett, Assistant Professor in the Department of Geosciences at Georgia State University will be visiting UGA's Department of Geography on Friday, April 18th to present the 2025 Globe Lecture. Dr. Scarlett's lecture is titled "'The struggle to be 'a little more free': How communities express agency through water practices."

**About Dr. Scarlett:** "Dr. Rachel Scarlett is an environmental scientist, mentor, and teacher. She is an Assistant Professor in the Department of Geosciences at Georgia State University. She is broadly interested in how urban development and environmental racism shape our waterways and the communities that use, depend on, and are impacted by urban water. She received her Ph.D. in the Ecological Sciences and Engineering Interdisciplinary Program at Purdue University. Dr. Scarlett was recently awarded the Ford Foundation dissertation fellowship (2020) and the David H. Smith Conservation Research Fellowship (2021)."

The 2025 Globe Lecture, presented by the Geography Graduate Student Association (GGSA), will be held at 3:30pm in the Geography-Geology Building Room 200D. All are welcome!

[Learn more about Dr. Scarlett's Research here!](#)

## Spring 2025 Course Evaluations - Available Now!



Department of Geography  
Franklin College of Arts and Sciences  
UNIVERSITY OF GEORGIA


### Spring '25 Course Evaluations

Available 4/18 - 5/6

Please follow these five simple steps to completing your course evaluation.

1. Scan the QR to the right
2. Login using your UGA MyID and password. Your identity will not be associated with your responses.
3. Select the course/instructor to evaluate. Evaluations must be completed for each course listed.
4. Follow the on-screen instructions to complete your evaluation. Unless otherwise specified, responses are required to all questions. You may enter "No Comment" or "NC" in the short answer section if you wish.
5. Click the Enter Evaluation button to submit your evaluation. Once you submit, you will not be able to make changes. If you need to complete evaluations for additional courses, return to Step 3.

Course Evaluations Site:



Student feedback on instructional effectiveness is an important tool. Your comments are appreciated!

## General News and Announcements



The Graticule Weekly is distributed each Friday Afternoon. If you have any news or events you'd like to share throughout the semester, please share them the Geography Department's Communication Coordinator well in advance.

Past editions of The Graticule Weekly are available to view on our website!



With the Fall semester in full swing, our community remains busy as faculty, staff, students, and visitors navigate our campus. Prioritize your transportation safety and the safety of other's by checking out [the Watch For Dawgs official website.](#)



Please download the new UGA Safe app from the Google Play or Apple App stores. Login using your UGA MyID or register as a guest to take advantage of a variety of safety features. For more information, please visit the [UGA Office of Emergency Preparedness website.](#)

Follow us on social media!





## UPCOMING DEFENSES



**Amanda Aragon**  
**Dissertation Defense**  
May 5, 2025  
1:00pm, GGY 147



**Atticus Tomcho**  
**Dissertation Proposal Defense**  
May 6, 2025  
1:30pm, GGY 147



**Julia Tootle**  
**Dissertation Proposal Defense**  
May 12, 2025  
10:30am, GGY 147



**Nancee Uniyal**  
**Dissertation Proposal Defense**  
May 16, 2025  
10am, GGY 147

## MARK YOUR CALENDAR



April 18  
GGY Bldg. 200D  
3:00 - 4:30 pm

Join us for a talk by Dr. Rachel Scarlett titled "The struggle to be 'a little more free': How communities express agency through water practices."



April 23  
GGY Room 200D  
3:30pm

Our 2025 Geography Undergraduate Awards Reception will take place on Wednesday, April 23rd. Award nominations are closed.



May 9  
MLC Reading Room  
11:00 am

Our 2025 Geography Graduation Ceremony will take place on Friday, May 9th at 11am. More information about location, ticketing, & more coming soon.



## Social Media

Want to stay up to date with all things UGA Geography? Follow us on our social media accounts. If you have any events, news, awards, or other information you'd like to share on our social media, please reach out to Matt Calonius.



<https://www.facebook.com/GeographyDepartmentUGA/>



<https://www.instagram.com/geographyuga/>



<https://twitter.com/UgaGeography>



<https://geography.uga.edu>

## OPPORTUNITIES AND ANNOUNCEMENTS

- [UWGCA Panel Discussion](#)

**CRISIS ON CAMPUS**

A Hybrid Panel Discussion for International Students, Staff, Postdocs, Faculty, Family, Friends, Co-workers and Allies!

- ❓ What if my visa is revoked?
- ❓ What if ICE is at my door?
- ❓ What can we do as a campus to protect each other?
- ❓ Is it safe to leave the country?
- ❓ What if I changed the gender marker on my passport?

**Sujata Winfield**  
Athens Immigration Attorney

A 1986 graduate of UGA's law school, Sujata has practiced immigration law exclusively since 2001.

**Brian Spears**  
Atlanta Civil Rights Attorney

Brian specializes in civil rights law, constitutional law, police misconduct, and jail/prison conditions.

**Sarah Owings**  
Atlanta Immigration Attorney

Sarah has extensive experience defending foreign nationals in removal and asylum proceedings.

Moderated by UCW co-chair and UGA Professor Cindy Hahamovitch, author of *No Man's Land: Jamaican Guestworkers in America and the Global History of Deportable Labor*.

**PLANET EARTH PASSPORT**

**SUN 4/27-2PM**

**THE TABLE**  
1250 S. LUMPKIN

**LINK**

Can't make it in person? [zoom.us/j/55400842009](https://zoom.us/j/55400842009)

- [Important Notes For Graduate Students - Carrel Spaces](#)

As you know, we have limited carrel spaces available to offer to our graduate students in Geography. For that, I would like to ask everyone who is graduating this Spring and Summer terms to please clear your carrel spaces off your personal belongings at the end of your tenure. Thank you!

For students who are not graduating this season, let me know if you no longer wish to use your carrel space or if you would like to request changes (I promise to look into all requests, but can't guarantee I'll be able to fulfill it). This is a good time to do that and I have received a couple of requests already.

We will have new students joining our program in the Fall and will need every carrel space available. Thanks!

## Prioritize Your Well Being:

### Crafty Coping Club

Crafty Coping Club      April 16th  
6:30 - 7:30pm  
UHC Health Center

Crafts, chats and learning new skills -  
Crafts provided or bring your own -  
Crafting also not required, just come chat!

### Change Stress Into Success

Change Stress      April 23rd  
Into Success      1:00 - 1:50pm  
Online

Join us for this four-part rotating series on managing stress & anxiety. You will learn how to identify and manage your own stress and anxiety as it arises.

### Grad Student Coaching

Group Coaching      April 25th  
for Graduate      11:00am  
Students      The Jill and Marvin  
Willis Center for  
Writing

Join us for a 30-minute group coaching session to discuss writing goals and strategies and then stay for an open 1.5 hour independent writing lab to work on your projects! Snacks will be provided!

# OPPORTUNITIES AND ANNOUNCEMENTS

## • [Georgia Rotary Student Program \(GRSP\) Scholarship](#)

the Georgia Rotary Student Program (GRSP) and Rotary Clubs of Elberton, Hartwell and Madison County are offering one \$12,000 scholarship for an international student at the University of Georgia. The GRSP Direct College Selection Scholarship application for the Fall 2025 - Spring 2026 academic year.

- Award amount: \$12,000.00 total
  - This is a one-year non-renewable scholarship that pays \$6,000 for Fall Semester (2025) and \$6,000 for Spring Semester (2026) from GRSP. One scholarships will be offered.
- Available to a current or new undergraduate international applicants to the University of Georgia.
- Awardee will benefit from unique mentoring and networking provided by the Rotary Clubs.
- In addition, you will be assigned a Rotary "host family" for the full year and make a commitment to participate in this aspect of GRSP. The host families serve as your family away from home and help connect you to Rotary. You will also visit the homes of Rotarians when campus is closed, over school breaks or at other traditional times as well as for student weekend events. It is an immersive life-changing experience that allows both the student and family to learn about each other's experiences, cultures, and customs.
- Awardee must be available August 15-17, 2025 for GRSP orientation, plus participate in six GRSP student weekends and District Conference. Rotary will provide transportation to all student events.
- Awardee will be required to make one presentation in Fall Semester and one in Spring Semester to each sponsoring Rotary Club
- Additional funds (from the student or other scholarships) would be required for costs over and above the scholarship amount

The Application will open Thursday, March 20 The deadline is 5 p.m. on Monday, May 5.

- **BEFORE APPLYING, BE AWARE:** the application CANNOT be saved to continue later. We suggest you print it out, gather all supporting documentation, and finalize your short answer replies separately. Then, when ready, copy and paste your answers into the application. You will need to have the contact information for a reference as well as a digital photo of yourself.
- This is an individual application for Georgia Rotary Student Program, so College staff cannot assist you with your application. A letter of recommendation is required. Letters can be sent directly to GRSP email, as noted on application.
- Apply here: [GRSP DIRECT COLLEGE APPLICATION 2025](#)
- 

What happens next?

- You will receive a confirmation email that your application has been received.
- The Rotary Club(s) may request an interview to better assess your candidacy.
- If offered the scholarship, you will be notified by email.
- By May 31, 2025, you will be notified if you have received a scholarship or not.
- If offered a scholarship and agreeing to the scholarship terms, you will be contacted by the local host family paired with you by GRSP.
- Scholarship funds are sent directly to the institution, not the awardee, and applied to the student's account at the college/university in two payments in Fall and Spring semester.

If you have any questions or need assistance with the application, please email [grsp@grsp.org](mailto:grsp@grsp.org).

## General News and Announcements



*The Graticule Weekly is distributed each Friday Afternoon. If you have any news or events you'd like to share throughout the semester, please share them the Geography Department's Communication Coordinator well in advance.*

*Past editions of The Graticule Weekly are available to view on our website!*



*With the Fall semester in full swing, our community remains busy as faculty, staff, students, and visitors navigate our campus. Prioritize your transportation safety and the safety of other's by checking out the Watch For Dawgs official website.*



*Please download the new UGA Safe app from the Google Play or Apple App stores. Login using your UGA MyID or register as a guest to take advantage of a variety of safety features. For more information, please visit the UGA Office of Emergency Preparedness website.*

Follow us on social media!





## OPPORTUNITIES AND ANNOUNCEMENTS

- [Southeast Stormwater Association's Annual Conference](#)

PLEASE JOIN US

*Staff Appreciation Celebration*

# THANK YOU, STAFF!

*President Jere W. Morehead invites you to the  
Spring Staff Appreciation Celebration*

**MONDAY  
MAY 12  
2025**

**Drop-in Lunch  
11:00am to 3:00pm  
STEGEMAN COLISEUM**

*All guests must RSVP at the link provided below.  
A token of appreciation for staff will be available on  
your way out.*

RSVP HERE

 **UNIVERSITY OF  
GEORGIA**

- [12th Annual Atlanta Studies Symposium](#)

We are excited to share the program for the 12th Annual Atlanta Studies Symposium! In addition to our amazing keynote speakers Hannah Palmer and Dr. Jeffrey Ogbar, we have a great set of paper and panel sessions planned for this year's symposium touching on everything from housing and displacement, energy and environmental issues, Black culture in Atlanta and so much more! Please be sure to register for the symposium at the link below!



May 2nd  
Morehouse



## Prioritize Your Well Being:

### Crafty Coping Club

Crafty Coping Club      April 23rd  
6:30 - 7:30pm  
UHC Health Center

Crafts, chats and learning new skills -  
Crafts provided or bring your own -  
Crafting also not required, just come  
chat!

### Change Stress Into Success

Change Stress      April 23rd  
Into Success      1:00 - 1:50pm  
Online

Join us for this four-part rotating  
series on managing stress & anxiety.  
You will learn how to identify and  
manage your own stress and anxiety  
as it arises.

### Grad Student Coaching

Group Coaching      April 25th  
for Graduate      11:00am  
Students      The Jill and Marvin  
Willis Center for  
Writing

*Join us for a 30-minute group  
coaching session to discuss writing  
goals and strategies and then stay for  
an open 1.5 hour independent writing  
lab to work on your projects! Snacks  
will be provided!*

# OPPORTUNITIES & ANNOUNCEMENTS

## • Summer Service Learning Opportunity



### Educational Experiences in Classroom and Community (Honors)

Service-Learning Opportunity at the  
Creative Explorers Camp (CEC)

**EDUC 4460S**

COURSE INSTRUCTOR:  
ANNA ABRAHAM, PH.D.  
TORRANCE CENTER

- Summer 2025 Course Offering (Thru Term)
- The Torrance Center runs signature annual summer day camps – Creative Explorers Camp (CEC) – at the Mary Frances Early College of Education. These weeklong day camps take place on the UGA campus in Aderhold Hall over June-July 2025.
- The camps are attended by 3<sup>rd</sup> to 5<sup>th</sup> graders from Clarke County and neighboring school districts. Each week is designed around a unique sensory-motor skillset, giving children the opportunity to enhance their creative thinking abilities across multiple modalities.
  - Creativity in Cooking (Jun 9-Jun 13)
  - Creativity in Music (Jul 12- Jul 16)
  - Creativity in Art (Jul 21-Jul 25)
  - Creativity in Words (Jul 28- Aug 1)
- Students enrolled in EDUC 4460S will gain vital experience in devising and implementing enrichment-oriented educational programs for young children that are centered on creative skill development. In gaining work experience as camp instructors, coordinators, and assistants, the course provides students the opportunity to develop wide pedagogically relevant skillsets while being directly engaged in societally meaningful work which directly aids the local community as it serves to hone creative skills of young children.

For more information, contact Anna Abraham, Ph.D. ([anna.abraham@uga.edu](mailto:anna.abraham@uga.edu); 706-542-8789)

## • Important Notes For Graduate Students - from Fabiana Hayden

- 1) If you are getting ready to reach important milestones in your program and would like to chat about your progress, schedule a short meeting with me here: [Bookings with me - Fabiana Hayden - Outlook](#). I will be happy to schedule a virtual meeting in Zoom if you're not available on Campus.
  - The Geography Graduate Handbook is also a great resource to guide you through your progress:
    - [MA/MS Handbook](#)
    - [PhD Handbook](#)
- 2) Remember to register for Summer term soon: [Graduate Students | UGA Summer](#)
- 3) Please fill out and get your advisor's approval in the [Advising Form](#). Then send the signed version to me by email.
  - This is done each term and is a crucial step to clearing holds and getting departmental permissions for desired courses.
- 4) Note that Fall 2025 registration for graduate students opens on Monday, April 7: [Registration Dates | Calendars | General Information | Office of the Registrar](#)

## Social Media

*Want to stay up to date with all things UGA Geography? Follow us on our social media accounts. If you have any events, news, awards, or other information you'd like to share on our social media, please reach out to Matt Colonius.*



<https://www.facebook.com/GeographyDepartmentUGA/>



<https://www.instagram.com/geographyuga/>



<https://twitter.com/UGaGeography>



<https://geography.uga.edu>

# OPPORTUNITIES & ANNOUNCEMENTS

## • TUTOR, UNIVERSITY OF GEORGIA ATHLETIC ASSOCIATION ACADEMIC SUPPORT SERVICES

### DESCRIPTION

Provide individual and small group tutoring to student-athletes in the Rankin Smith Student-Athlete Academic Center. Assist students in improving academic achievement by meeting with them weekly to clarify concepts, enhance study skills, and review class materials.

### COURSES NEEDED

GEOG 1111

\*additional courses in other subjects needed as well\*

### COMPENSATION/HOURS

\*Undergraduate students - \$13/hour

\*Graduate students/professionals - \$15/hour

\*\*Please note that individuals with an assistantship or any other on-campus employment cannot exceed 20 hours per week across all jobs\*\*

### POSITION TYPE

\*Part-time, not eligible for benefits

\*Tutoring will be conducted in-person

\*Hours of Operation:

Sunday – 5-9:30pm

Monday-Thursday – 8am-9:30pm

Friday – 8am-4:30pm

\*evening availability is not required, but always needed

### QUALIFICATIONS

\*Must be in at least second year of undergraduate study or a graduate student/professional

\*Must have earned a B or above in course(s) you are tutoring

\*Must have a minimum GPA of 3.0

### DESIRED CLASS LEVEL(S)

\*3rd Year, 4th Year, Graduate Student, Alumnus

### EXPERIENTIAL LEARNING CREDIT

\*Undergraduate student tutors may be eligible to receive Experiential Learning Credit

### APPLICATION PROCEDURES/ADDITIONAL INFORMATION

\*If you are interested, please reach out to [rankintutoring@uga.edu](mailto:rankintutoring@uga.edu).

## General News and Announcements



*The Graticule Weekly is distributed each Friday Afternoon. If you have any news or events you'd like to share throughout the semester, please share them the Geography Department's Communication Coordinator well in advance. Past editions of The Graticule Weekly are available to view on our website!*



*With the Fall semester in full swing, our community remains busy as faculty, staff, students, and visitors navigate our campus. Prioritize your transportation safety and the safety of other's by checking out [the Watch For Dawgs official website](#).*



*Please download the new UGA Safe app from the Google Play or Apple App stores. Login using your UGA MyID or register as a guest to take advantage of a variety of safety features. For more information, please visit the [UGA Office of Emergency Preparedness website](#).*

Follow us on social media!







**Center for Counseling  
& Personal Evaluation**  
*Mary Frances Early College of Education*  
**UNIVERSITY OF GEORGIA**



**Thursdays  
starting  
February 13th  
6:00-7:30pm**



**SCAN THE QR CODE TO  
COMPLETE AN INTEREST FORM  
OR CALL 706-542-8508**



# **Latinx Student Support Group**





**The Fontaine Center**

*University Health Center*

*Student Affairs*

**UNIVERSITY OF GEORGIA**

# GRADUATE STUDENT GROUP WELLNESS COACHING

*Looking to connect with students working on dissertations, theses, academic projects, or research papers? Register for Graduate Student Group Wellness Coaching to stay motivated and improve strategies for time management and work/life balance.*

*Join us for 30-minute sessions to discuss academic goals and writing strategies or stay for an open 1.5 hour writing lab to work on your projects! Snacks provided!*

**FRIDAYS STARTING 1-24**  
**WILLIS WRITING CENTER**  
**PARK HALL 66**  
**11AM-1PM**

*\*Snacks will be provided!*





### GET HELP

Whether it's a life-threatening emergency, a non-emergency concern, or a crime tip; there are several options to relay those concerns.

### MOBILE BLUELIGHT

Immediately call the UGA Police and share your location in real-time with them.

### FRIEND WALK

Send your location in real-time to a friend so they can watch you as you walk to your destination.

### CHAT WITH UGA POLICE

Report a concern by texting with UGA Police.

### HOW TO RESPOND TO AN EMERGENCY

Conveniently located in one place to help you take immediate action.



**DOWNLOAD  
THE APP!**

[t.uga.edu/7Xf](https://t.uga.edu/7Xf)





FRIDAY, APRIL 25TH, 2025

# The Graticule Weekly

UGA Geography's Weekly Newsletter



## 2025 Undergraduate Honors and Award Winners

The Department of Geography is proud to present our 2025 Undergraduate Honors and Award winners. We enjoyed celebrating the wonderful accomplishments of these students at our Honors and Award reception on Wednesday - thank you all for attending!

Please join us in congratulating our outstanding 2025 award winners!

Merle C. Prunty Memorial Undergraduate  
Scholarship  
**Lilly Cargile**

Atlas Award for Academic Excellence  
**Brianna Francis, Richard Little**

NCGE/AAG Outstanding Senior Award  
**Jamie Jordan, Micah Shannon**

Globe Award for Academic  
Accomplishment  
**Shania Green and Jack Paino**

Department of Geography Alumni  
Awards

**Jada Lamar**

**Jacob Hamil**

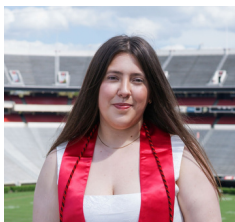
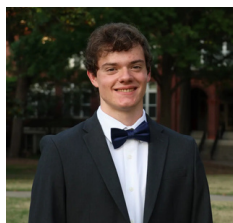
**Emma Benedict**

**Logan Wiley**

Engagement and Community Outreach  
Award

**Emma Benedict, Logan Wiley**

DeVorse Travel Award  
**Sydney Eigman, Dani Da Silva**



## General News and Announcements



*The Graticule Weekly is distributed each Friday Afternoon. If you have any news or events you'd like to share throughout the semester, please share them the Geography Department's Communication Coordinator well in advance.*

*Past editions of The Graticule Weekly are available to view on our website!*



*With the Spring semester in full swing, our community remains busy as faculty, staff, students, and visitors navigate our campus. Prioritize your transportation safety and the safety of other's by checking out the Watch For Dawgs official website.*



*Please download the new UGA Safe app from the Google Play or Apple App stores. Login using your UGA MyID or register as a guest to take advantage of a variety of safety features. For more information, please visit the UGA Office of Emergency Preparedness website.*

Follow us on social media!



## FACULTY SPOTLIGHT

### Fausto Sarmiento Awarded 2025 Distinguished Landscape Practitioner Award



UGA Geography Professor Fausto Sarmiento has been awarded the 2025 Distinguished Landscape Practitioner Award by the North American Chapter of the International Association for Landscape Ecology (IALE-NA). This award is given to “individuals or organizations that have made significant contributions to the applications of landscape ecology principles to real-world problems.” In a recent press release, the IALE-NA shared the following about Dr. Sarmiento:

“Dr. Fausto Sarmiento, Full Professor of Mountain Science, in the Department of Geography at the University of Georgia, was awarded the 2025 Distinguished Landscape Practitioner Award by the North American Chapter of the International Association for Landscape Ecology (IALE-NA) at the annual meeting in North Carolina, Raliegh, USA, April 12-17th. This honor is bestowed to individuals or organizations that have made significant contributions to the applications of landscape ecology principles to real-world problems.

Demonstrated by nearly 30 years of devoted scholarship to neotropical cultural and natural mountain landscapes, Dr. Sarmiento has made substantial contributions to the field of mountain geography, biogeography, cultural landscapes, ecological legacies, ethnoecology, and biocultural diversity heritage conservation. Dr. Sarmiento is an editor of the book series “Montology” and has published several foundational montology research articles on the interaction of human-environment dimensions for high elevation forest landscapes – resulting in shifting paradigms on policy and management decisions for these sensitive environments including the Andean flanks. Dr. Sarmiento was the author or editor of 10 books on topics ranging from The Laws of Ecology and Critical Biogeography of the Northern Andean Highlands to Indigenous Revival and the Conservation of Sacred Natural Sites in the Americas. Sarmiento’s books are also written in Spanish thereby extending the reach of landscape ecology to Spanish-speaking regions. Notably, Dr. Sarmiento has provided a Spanish adaptation of Zev Naveh and Arthur Lieberman’s classic 1984 textbook “Landscape Ecology and Applications” published in 2002 for Latin American students and practitioners.”

[Learn more about Dr. Sarmiento’s Research here!](#)

## Reading Day Geography Decompress Zone

**Need To Decompress?**

**Music, coloring, & snacks!**

- **Reading Day**
- **11-3**
- **Geography Office (204)**

**NO STUDYING ALLOWED!**

## Social Media

*Want to stay up to date with all things UGA Geography? Follow us on our social media accounts. If you have any events, news, awards, or other information you'd like to share on our social media, please reach out to Matt Colonius.*



<https://www.facebook.com/GeographyDepartmentUGA/>



<https://www.instagram.com/geographyuga/>



<https://twitter.com/UgaGeography>



<https://geography.uga.edu>



## UPCOMING DEFENSES



**Amanda Aragon**  
Dissertation Defense  
May 5, 2025  
1:00pm, GGY 147



**Atticus Tomcho**  
Dissertation Proposal Defense  
May 6, 2025  
1:30pm, GGY 147



**Julia Tootle**  
Dissertation Proposal Defense  
May 12, 2025  
10:30am, GGY 147



**Nancee Uniyal**  
Dissertation Proposal Defense  
May 16, 2025  
10am, GGY 147

## MARK YOUR CALENDAR



May 8<sup>th</sup>  
Stegeman Colliseum  
10am - Masters  
2pm - Doctoral

The University of Georgia will host it's commencement ceremony for Graduate students on May 8<sup>th</sup> in Stegeman Colosseum. [Click here for more info.](#)



May 9<sup>th</sup>  
Stegeman Colliseum  
10am - Masters  
2pm - Doctoral

The University of Georgia will host it's commencement ceremony for Undergraduate students on May 9<sup>th</sup> in Sanford Stadium. [Click here for more info.](#)



May 9  
MLC Reading Room  
11:00 am

Our 2025 Geography Graduation Ceremony will take place on Friday, May 9th at 11am. More information about location, ticketing, & more coming soon.



## General News and Announcements



The Graticule Weekly is distributed each Friday Afternoon. If you have any news or events you'd like to share throughout the semester, please share them the Geography Department's Communication Coordinator well in advance. Past editions of The Graticule Weekly are available to view on our website!



With the Spring semester in full swing, our community remains busy as faculty, staff, students, and visitors navigate our campus. Prioritize your transportation safety and the safety of other's by checking out [the Watch For Dawgs official website.](#)



Please download the new UGA Safe app from the Google Play or Apple App stores. Login using your UGA MyID or register as a guest to take advantage of a variety of safety features. For more information, please visit the [UGA Office of Emergency Preparedness website.](#)

Follow us on social media!





## OPPORTUNITIES AND ANNOUNCEMENTS

- [Linnentown PBS Documentary Screening](#)



- [Geography Graduate Student Association \(GGSA\) Elections!](#)

Polls are now open for next year's Geography Graduate Student Association (GGSA) executive board! Please cast your vote for our next GGSA executive board by 5 pm on Monday April 28th

The new e-board will be announced on April 29th.

Please contact Kayla Edgett ([kayla.edgett@uga.edu](mailto:kayla.edgett@uga.edu)) or Isabella Fiorentino ([isabella.fiorentino@uga.edu](mailto:isabella.fiorentino@uga.edu)) for questions or further information

- [Important Notes For Graduate Students](#)

**Advisement Forms** - This is a friendly reminder that all students must submit a signed [advisement form](#) to have their advising hold lifted for fall registration. Please send these forms to Fabiana BEFORE you break/leave for summer - even if you are only taking 7000/7300 or 9000/9300.

This is important to take care of soon for a few reasons: 1) courses get cancelled over the summer if enrollment is low. We need you to sign up before the last minute to avoid this. 2) Fabiana is helping new students get oriented in early August, so it is a good courtesy to her not to add this to her plate then. 3) The research and writing courses (7000/7300, 9000/9300) do require work on our end to open them up for you, so we appreciate not having to do this last minute.

## Social Media

Want to stay up to date with all things UGA Geography? Follow us on our social media accounts. If you have any events, news, awards, or other information you'd like to share on our social media, please reach out to Matt Calonius.



<https://www.facebook.com/GeographyDepartmentUGA/>



<https://www.instagram.com/geographyuga/>



<https://twitter.com/UGaGeography>



<https://geography.uga.edu>

# OPPORTUNITIES AND ANNOUNCEMENTS

## • [Georgia Rotary Student Program \(GRSP\) Scholarship](#)

the Georgia Rotary Student Program (GRSP) and Rotary Clubs of Elberton, Hartwell and Madison County are offering one \$12,000 scholarship for an international student at the University of Georgia. The GRSP Direct College Selection Scholarship application for the Fall 2025 - Spring 2026 academic year.

- Award amount: \$12,000.00 total
  - This is a one-year non-renewable scholarship that pays \$6,000 for Fall Semester (2025) and \$6,000 for Spring Semester (2026) from GRSP. One scholarships will be offered.
- Available to a current or new undergraduate international applicants to the University of Georgia.
- Awardee will benefit from unique mentoring and networking provided by the Rotary Clubs.
- In addition, you will be assigned a Rotary "host family" for the full year and make a commitment to participate in this aspect of GRSP. The host families serve as your family away from home and help connect you to Rotary. You will also visit the homes of Rotarians when campus is closed, over school breaks or at other traditional times as well as for student weekend events. It is an immersive life-changing experience that allows both the student and family to learn about each other's experiences, cultures, and customs.
- Awardee must be available August 15-17, 2025 for GRSP orientation, plus participate in six GRSP student weekends and District Conference. Rotary will provide transportation to all student events.
- Awardee will be required to make one presentation in Fall Semester and one in Spring Semester to each sponsoring Rotary Club
- Additional funds (from the student or other scholarships) would be required for costs over and above the scholarship amount

The Application will open Thursday, March 20 The deadline is 5 p.m. on Monday, May 5.

- **BEFORE APPLYING, BE AWARE:** the application CANNOT be saved to continue later. We suggest you print it out, gather all supporting documentation, and finalize your short answer replies separately. Then, when ready, copy and paste your answers into the application. You will need to have the contact information for a reference as well as a digital photo of yourself.
- This is an individual application for Georgia Rotary Student Program, so College staff cannot assist you with your application. A letter of recommendation is required. Letters can be sent directly to GRSP email, as noted on application.
- Apply here: [GRSP DIRECT COLLEGE APPLICATION 2025](#)
- 

What happens next?

- You will receive a confirmation email that your application has been received.
- The Rotary Club(s) may request an interview to better assess your candidacy.
- If offered the scholarship, you will be notified by email.
- By May 31, 2025, you will be notified if you have received a scholarship or not.
- If offered a scholarship and agreeing to the scholarship terms, you will be contacted by the local host family paired with you by GRSP.
- Scholarship funds are sent directly to the institution, not the awardee, and applied to the student's account at the college/university in two payments in Fall and Spring semester.

If you have any questions or need assistance with the application, please email [grsp@grsp.org](mailto:grsp@grsp.org).

## General News and Announcements



*The Graticule Weekly is distributed each Friday Afternoon. If you have any news or events you'd like to share throughout the semester, please share them the Geography Department's Communication Coordinator well in advance.*

*Past editions of The Graticule Weekly are available to view on our website!*



*With the Fall semester in full swing, our community remains busy as faculty, staff, students, and visitors navigate our campus. Prioritize your transportation safety and the safety of other's by checking out the Watch For Dawgs official website.*



*Please download the new UGA Safe app from the Google Play or Apple App stores. Login using your UGA MyID or register as a guest to take advantage of a variety of safety features. For more information, please visit the UGA Office of Emergency Preparedness website.*

Follow us on social media!



## OPPORTUNITIES AND ANNOUNCEMENTS

- [Southeast Stormwater Association's Annual Conference](#)

PLEASE JOIN US

Staff Appreciation Celebration

# THANK YOU, STAFF!

President Jere W. Morehead invites you to the  
Spring Staff Appreciation Celebration

**MONDAY  
MAY 12  
2025**

**Drop-in Lunch  
11:00am to 3:00pm  
STEGEMAN COLISEUM**

All guests must RSVP at the link provided below.  
A token of appreciation for staff will be available on  
your way out.

RSVP HERE

 UNIVERSITY OF  
GEORGIA

- [12th Annual Atlanta Studies Symposium](#)

We are excited to share the program for the 12th Annual Atlanta Studies Symposium! In addition to our amazing keynote speakers Hannah Palmer and Dr. Jeffrey Ogbar, we have a great set of paper and panel sessions planned for this year's symposium touching on everything from housing and displacement, energy and environmental issues, Black culture in Atlanta and so much more! Please be sure to register for the symposium at the link below!



May 2nd  
Morehouse



## Social Media

Want to stay up to date with all things UGA Geography? Follow us on our social media accounts. If you have any events, news, awards, or other information you'd like to share on our social media, please reach out to Matt Calonius.



<https://www.facebook.com/GeographyDepartmentUGA/>



<https://www.instagram.com/geographyuga/>



<https://twitter.com/UGaGeography>



<https://geography.uga.edu>



# OPPORTUNITIES & ANNOUNCEMENTS

## • Summer Service Learning Opportunity



### Educational Experiences in Classroom and Community (Honors)

Service-Learning Opportunity at the  
Creative Explorers Camp (CEC)

**EDUC 4460S**

COURSE INSTRUCTOR:  
ANNA ABRAHAM, PH.D.  
TORRANCE CENTER

- Summer 2025 Course Offering (Thru Term)
- The Torrance Center runs signature annual summer day camps – Creative Explorers Camp (CEC) – at the Mary Frances Early College of Education. These weeklong day camps take place on the UGA campus in Aderhold Hall over June-July 2025.
- The camps are attended by 3<sup>rd</sup> to 5<sup>th</sup> graders from Clarke County and neighboring school districts. Each week is designed around a unique sensory-motor skillset, giving children the opportunity to enhance their creative thinking abilities across multiple modalities.
  - Creativity in Cooking (Jun 9-Jun 13)
  - Creativity in Music (Jul 12- Jul 16)
  - Creativity in Art (Jul 21-Jul 25)
  - Creativity in Words (Jul 28- Aug 1)
- Students enrolled in EDUC 4460S will gain vital experience in devising and implementing enrichment-oriented educational programs for young children that are centered on creative skill development. In gaining work experience as camp instructors, coordinators, and assistants, the course provides students the opportunity to develop wide pedagogically relevant skillsets while being directly engaged in societally meaningful work which directly aids the local community as it serves to hone creative skills of young children.

For more information, contact Anna Abraham, Ph.D. ([anna.abraham@uga.edu](mailto:anna.abraham@uga.edu); 706-542-8789)

## • Important Notes For Graduate Students - from Fabiana Hayden

1) If you are getting ready to reach important milestones in your program and would like to chat about your progress, schedule a short meeting with me here: [Bookings with me - Fabiana Hayden - Outlook](#). I will be happy to schedule a virtual meeting in Zoom if you're not available on Campus.

- The Geography Graduate Handbook is also a great resource to guide you through your progress:
  - [MA/MS Handbook](#)
  - [PhD Handbook](#)

2) Remember to register for Summer term soon: [Graduate Students](#) | [UGA Summer](#)

3) Please fill out and get your advisor's approval in the [Advising Form](#). Then send the signed version to me by email.

- This is done each term and is a crucial step to clearing holds and getting departmental permissions for desired courses.

4) Note that Fall 2025 registration for graduate students opens on Monday, April 7: [Registration Dates](#) | [Calendars](#) | [General Information](#) | [Office of the Registrar](#)

## General News and Announcements



*The Graticule Weekly is distributed each Friday Afternoon. If you have any news or events you'd like to share throughout the semester, please share them the Geography Department's Communication Coordinator well in advance. Past editions of The Graticule Weekly are available to view on our website!*



*With the Fall semester in full swing, our community remains busy as faculty, staff, students, and visitors navigate our campus. Prioritize your transportation safety and the safety of other's by checking out [the Watch For Dawgs official website](#).*



*Please download the new UGA Safe app from the Google Play or Apple App stores. Login using your UGA MyID or register as a guest to take advantage of a variety of safety features. For more information, please visit the [UGA Office of Emergency Preparedness website](#).*

Follow us on social media!



# OPPORTUNITIES & ANNOUNCEMENTS

- [TUTOR, UNIVERSITY OF GEORGIA ATHLETIC ASSOCIATION ACADEMIC SUPPORT SERVICES](#)

## DESCRIPTION

Provide individual and small group tutoring to student-athletes in the Rankin Smith Student-Athlete Academic Center. Assist students in improving academic achievement by meeting with them weekly to clarify concepts, enhance study skills, and review class materials.

## COURSES NEEDED

GEOG 1111

\*additional courses in other subjects needed as well\*

## COMPENSATION/HOURS

\*Undergraduate students - \$13/hour

\*Graduate students/professionals - \$15/hour

\*\*Please note that individuals with an assistantship or any other on-campus employment cannot exceed 20 hours per week across all jobs\*\*

## POSITION TYPE

\*Part-time, not eligible for benefits

\*Tutoring will be conducted in-person

\*Hours of Operation:

Sunday – 5-9:30pm

Monday-Thursday – 8am-9:30pm

Friday – 8am-4:30pm

\*evening availability is not required, but always needed

## QUALIFICATIONS

\*Must be in at least second year of undergraduate study or a graduate student/professional

\*Must have earned a B or above in course(s) you are tutoring

\*Must have a minimum GPA of 3.0

## DESIRED CLASS LEVEL(S)

\*3rd Year, 4th Year, Graduate Student, Alumnus

## EXPERIENTIAL LEARNING CREDIT

\*Undergraduate student tutors may be eligible to receive Experiential Learning Credit

## APPLICATION PROCEDURES/ADDITIONAL INFORMATION

\*If you are interested, please reach out to [rankintutoring@uga.edu](mailto:rankintutoring@uga.edu).

## Social Media

*Want to stay up to date with all things UGA Geography? Follow us on our social media accounts. If you have any events, news, awards, or other information you'd like to share on our social media, please reach out to Matt Calonius.*



<https://www.facebook.com/GeographyDepartmentUGA/>



<https://www.instagram.com/geographyuga/>



<https://twitter.com/UGaGeography>



<https://geography.uga.edu>



### GET HELP

Whether it's a life-threatening emergency, a non-emergency concern, or a crime tip; there are several options to relay those concerns.

### MOBILE BLUELIGHT

Immediately call the UGA Police and share your location in real-time with them.

### FRIEND WALK

Send your location in real-time to a friend so they can watch you as you walk to your destination.

### CHAT WITH UGA POLICE

Report a concern by texting with UGA Police.

### HOW TO RESPOND TO AN EMERGENCY

Conveniently located in one place to help you take immediate action.



**DOWNLOAD  
THE APP!**

[t.uga.edu/7Xf](https://t.uga.edu/7Xf)

